

# PRODUCT *KNOWLEDGE*

*Retail*  
*Winter 2 2016*  
*(10.30 Delivery)*

BCBGMAXAZRIA



# THE MISSION STATEMENT

## OUR VISION

*Our vision is TO MAKE EVERY  
WOMAN LOOK AND FEEL  
BEAUTIFUL in all of her life's  
special moments.*

## OUR MISSION

*Our mission is TO INSPIRE  
WOMEN TO BE INSPIRATIONAL;  
to feel beautiful, confident and  
empowered.*

# THE MISSION STATEMENT

## CULTURAL VALUES

*We are a DYNAMIC community of  
INSPIRED INDIVIDUALS.*

*We are a PASSIONATE TEAM, that thrives  
on INNOVATION, CREATIVITY  
and SELF EXPRESSION.*

*We are IMAGINATIVE  
and FORWARD THINKING, and we  
make the impossible possible.*

*We devote ourselves to GROWTH,  
CULTIVATING TALENT and fostering  
a true sense of FAMILY.*

*We firmly BELIEVE that it is not what  
we acquire, but WHO WE BECOME and  
WHAT WE CONTRIBUTE, that gives  
our lives MEANING.*

## BUSINESS VALUES

*WE BELIEVE that OUR BRANDS  
are the MOST VALUABLE part of our  
organization.*

*We are a GLOBAL COMMUNITY  
united by our belief in our products and  
our brands.*

*We constantly EVOLVE our business  
to represent THE LIFESTYLE of  
TODAY'S DYNAMIC WOMEN.*

## PRODUCT VALUES

*Our product does not follow trends; it  
EMBODIES STYLE.*

*Our product is a true combination of  
EUROPEAN SOPHISTICATION and  
AMERICAN SPIRIT.*

*We focus on the FIT, CONSTRUCTION  
and FABRICATION of every product  
we make.*

*We incorporate CRAFTSMANSHIP,  
INNOVATION, DESIGN INTEGRITY,  
LUXURY and a VISIONARY POINT of  
VIEW into every garment.*

# BRAND MESSAGE

*Always on the forefront of fashion, BCBGMAXAZRIA is the premier lifestyle collection for the dynamic woman. Fusing creativity, accessibility, desirability and wearability, BCBGMAXAZRIA occupies a unique position in the American fashion marketplace, offering sophisticated, confident designs that take customers from work to the weekend in style.*

## THE CUSTOMER

### *THE CONNOISSEUR*

is chic and sophisticated with a discriminating sense of style that ranges from casual to classically elegant.

### *THE VISIONARY*

is an independent thinker and trendsetter, a trailblazer in aspirational expressions of fashion.

### *THE SOCIALITE*

is part of the enviable elite, affluent, coiffed and well versed in the latest must-have styles.

### *THE URBAN ROCKER*

is cutting-edge and effortlessly cool, with a style that incorporates a rock-and-roll influence.



## DESIGN PHILOSOPHY

BCBGMAXAZRIA collections begin with a vision inspired by art and culture, which is translated into colors, prints, silhouettes and finishes. Our passionate team of talent works diligently to ensure that every garment represents the integrity of the brand. With steadfast attention to fabrication, construction and fit, each collection comes together as a complete and inspirational narrative.

## DESIGN PRINCIPLES

LUXURY  
TASTEFUL  
SEXY  
DRESSED UP  
ECLECTIC/VINTAGE  
ATTENTION TO DETAIL  
ASPIRATIONAL



# GUEST EXPERIENCE:

*Treat every customer like a guest in our home.*

**G**reet every customer with a smile within 10 seconds

- Approach and re-approach every customer with genuine enthusiasm
- Be attentive to every customer even during the busiest time
- Your attitude and body language are part of the guest experience!
- Inform your customer that additional sizes are available

**U**nderstand the customer's needs

- Engage in friendly conversation and ask open ended questions
- Listen to your customer's needs and exceed them
- Exchange names with your customer and use it throughout the sale

**E**xcite the customer!

- Explain the collections by using your expertise in product knowledge
- Use buzz words and line inspiration to romance the sale
- Show your customer a 1st class shopping experience

**S**uggestive sell and wardrobe every customer

- Head-to-toe
- Be their specialist – put together a complete look
- Suggest footwear, handbags and accessories every time
- Educate the customer on features and benefits
- To confirm the sale
- Team- sell and pamper your customer

**T**hank your customers by inviting them to keep in touch with you

- Invite every customer to be in your client book and
- Add them to market works
- Send every customer a thank you card
- Escort every customer to the door and invite them back



# BODY TYPES

Body type is one of many factors to consider when styling our customers. Use the information below as guidance when selecting and suggesting looks. Note that each garment shown in the following pages includes body-type letters A, T, H, X as a suggestion of which shape(s) the garment will most easily flatter or fit. It is important to:

- Remember that customers with body types other than those listed can also be styled in the looks.
- Always ask questions to understand what she likes to accentuate and/or deflect attention from.
- Learn what silhouettes and fits she is most comfortable in and prefers to wear.
- Refer to body types in flattering, general terms. Body-shape letters are for internal reference only.



## A-SHAPE

- Pear-shaped
- Usually narrow shoulders and a defined waist
- Hip measurement 5% larger than shoulder measurement typically
- Choose styles that focus attention on her upper body

### MUST-HAVES:

- Jackets and tops with strong shoulders or eye-catching necklines
- Jackets and tops that end above or below the widest part of the hips
- Boot-cut or wide legs, and darker hues for bottoms
- A-line skirts to balance out wider hips
- Combination dresses with darker skirts and lighter or printed tops
- Boatneck styles or tops with horizontal stripes to add width to shoulders
- Printed or embellished tops to draw attention upward
- Dynamic necklaces, earrings or scarves to keep focus near the face

### AVOID:

- Styles that draw a horizontal line across the hips, such as low-belts, tops that end at the hip, or pants with horizontal pockets at the front



## T-SHAPE

- Athletic-shaped
- Usually broad shoulders and/or large bust
- Shoulder measurement 5% larger than hip measurement typically
- Choose styles that accentuate her slender hips

### MUST-HAVES:

- V-necks, turtlenecks, halters or deep scoop-necks, which focus attention at the center of the upper body and slim shoulders
- Striped or printed skirts and lighter bottoms to draw attention downward
- Head-to-toe color for a streamlined silhouette
- Flared pants to balance shoulders
- Embellished skirts and pants to keep the focus on the lower body
- Jackets and tops that are fitted at the waist and flare out to add volume to hips
- Formfitting skirts to contour the hips

### AVOID:

- Oversized lapels, shoulder pads and voluminous sleeves that emphasize the shoulders, as well as horizontal stripes across the shoulders or bust



## H-SHAPE

- Straight-shaped
- Waist measurement no less than 75% of hips or shoulders
- Matching shoulder and hip measurements
- Focus on creating curves and centering attention on her upper and lower body

### MUST-HAVES:

- All over patterns to add softness to the silhouette
- Relaxed tops paired with slim bottoms to emphasize a slender lower body
- Fitted on straight pants to accentuate hips
- Tailored jackets that create shape, such as one with a fitted waist and peplum hem

### AVOID:

- Wide-leg pants, which achieve an allover rectangle shape, and details around the waist area



## X-SHAPE

- Hourglass-shaped
- Balanced shoulders and hips with smaller, defined waist
- Shoulder and hip measurements within 5% of each other with a waist measurement approximately 10 inches less than shoulder or hip measurements
- Maintain a balanced proportion between shoulders and hips, and showcase her smaller waist

### MUST-HAVES:

- Fitted tops and tees to accentuate both the bustline and slim waist
- A power skirt or pencil skirt to accentuate curves
- A well-fitting suit will accentuate curves
- A sleek dress in a single color to contour the shape

### AVOID:

- Boxy cuts that hide the silhouette and allover horizontal stripes, which can add bulk to the shape



10/30

THEME:

# TINSEL TOWN

The codes of urban street and free style culture as seen through a filter of chic bling, pared down and stylized for the eccentric jetsetter.





# 10.30 – TINSEL TOWN

## What Is The Mood/Inspiration Of The Collection?

- The codes of urban street and free style culture as seen through a filter of chic bling, pared down and stylized for the eccentric jetsetter.
- Materials that play with the light for day and night bringing festive joy to daily life.
- Opposites attract: sport meets metallic, lace meets leather and sheer meets shaggy.

## What Colors Will We Be Seeing This Season?

2 color stories:

- Classic colors contrasted with jewel tones: White, Bare Pink, Black and Red Berry
- Metallics: Rose Gold, Pewter, Gold contrasted with Black and White

## What Fabrications Are You Using This Season?

- Lace
- Clip Dot Jacquard
- Jacquard Suiting
- Satin Back Crepe
- Burnout Lace
- Faux Leather
- Metallic Jersey
- Velour Stripe Knit
- Ponte

## What's New in Silhouettes & Details In This Collection?

- Novelty Jackets
  - Crop Jackets
  - Tailored Jackets
- Leggings
- Mini Skirts
- Pleated Skirts
- Peplum Top
- Victorian Blouses
- A-line Dresses
- Handkerchief Hem Dresses
- Shirt Dressing
- Tunic Sweater Dresses
- Lurex
- Glittered Sequins
- Feathers
- Embroidery
- Ruffles
- Athletic Stripe Detail

## What Accessories Will We See In This Collection?

- It is all about "mixed elements" that complement the collection with a night out sporty twist.

## How is This Collection Different from Your Previous Delivery?

- This is our true holiday collection. Shine on Ladies!

## What's New:



Embellished Jacket And Skinny Pant



Long Sleeve Lace Top With Wide Leg Pant



Sleeveless Lace Top With Pleated Metallic Skirt



Sleeveless Metallic Sweater With Pleated Skirt



Metallic Bomber Jacket With Shirt Dress



Long Sleeve Casual A-Line Dress



Long Sleeve Pleated Bottom Dress



Embellished Shift Dress

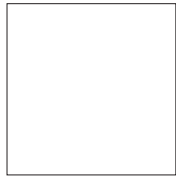


Off The Shoulder Sequin Cocktail Dress

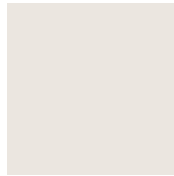
# COLOR PALETTE

## CORE

---



WHITE



CHALK



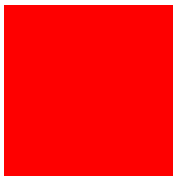
BARE PINK



SHADOW  
BLUSH



HAZELNUT



RED BERRY



ORIENT BLUE



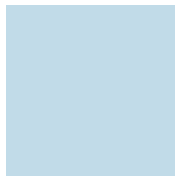
DARK NAVY



BLACK

## FASHION

---



BLUE SMOKE



BLUESTEEL



DARK TEAL



BORDEAUX



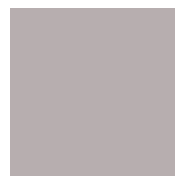
GOLD



METALLIC ROSE



ALPINE



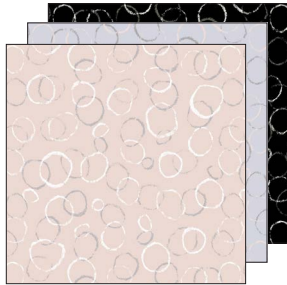
SILVER



GUNMETAL

# PRINTS AND DEVELOPMENTS

## PRINTS



CROSSHATCH  
HALOS



GOUACHE FRINGE

## DEVELOPMENTS



ART DECO SEQUIN ON  
MESH



CAMEO SCALLOP LACE



CHEVRON GEOMETRIC  
EMBROIDERY ON  
TULLE



GLITTER SEQUIN ON  
MESH



LEAF FLORAL LACE



CRYSTAL  
EMBELLISHMENTS



STRIPE FRINGE  
JACQUARD



# HOT

Americana at Brand  
Aventura  
Barton Creek  
Beverly Center  
Beverly Hills  
Biltmore Fashion Park  
Boca Raton  
Canal Place  
City Place  
Dallas Galleria  
Del Amo  
Delray Beach  
Fashion Valley  
Fashion Island  
Ft. Lauderdale Galleria  
Forum Shops  
Galleria at Roseville  
Glendale Galleria  
Horton Plaza  
Houston Galleria  
Houston Pavillions  
International Plaza  
Kierland Commons  
La Cantera  
La Encantada  
La Plaza Mall  
Las Vegas  
Mall at Millenia  
Miracle Mile  
Mission Viejo  
Naples - Waterside  
Northpark  
Northstar  
Palm Beach Gardens  
Paseo Colorado  
Patios  
Pembroke Gardens  
Perkins Rowe  
Plaza El Segundo  
Plaza Las Americas  
San Juan  
Santa Monica Place  
Scottsdale Arizona  
Sherman Oaks  
South Beach  
St. John Town Center  
Summerlin  
Sunset Plaza  
The Domain  
The Falls  
The Patios at Valencia  
Topanga Plaza  
Tumon Sands Plaza  
University Town Center  
Venetian  
Wailea  
Waterside  
Westside Pavillion  
Woodlands  
Yacht Haven

# COLD

40th & 5th  
ABQ Uptown  
Armitage  
Avalon  
Beachwood  
Bellevue  
Bridgewater Commons  
Broadway  
Burlington Mall  
Chesnut Hills  
Cherry Creek  
Cherry Hill  
Copley Place  
Country Club Plaza  
Crocker Park  
Damen Avenue  
Fair Oaks  
Flatiron  
Garden State  
Georgetown  
Keystone Center  
King of Prussia  
La Cumbre  
Lenox Square  
Lincoln Park  
Mall at Green Hill  
Mall of America  
Menlo Park  
New York (Madison)  
Northbrook  
Oakbrook Center  
Oak Street  
Old Orchard Center  
Pacific Place  
Palisades Center  
Pentagon  
Perimeter Mall  
Playground at Caesar's  
Plaza Frontenac  
Plaza Frontenac  
Pioneer Place  
Roosevelt  
San Francisco  
Santana Row  
Short Hills  
Stanford  
Staten Island  
Somerset  
South Park  
South Shore  
Southside Works  
Stony Point  
The Summit  
Third Ave  
Towson Town Center  
Twelve Oaks  
Tyson Galleria  
Union Square  
Walt Whitman  
Westchester  
West Farms  
Wisconsin Place

# EVENING DOORS

## AA EVENING

5th Avenue at 40th  
Aventura Mall  
Beverly Center  
Beverly Hills  
Century City  
Copley Place  
Fashion Island  
Fashion Valley  
Flatiron  
Forum Shops  
Houston Galleria  
King of Prussia  
Madison  
Northpark  
Plaza Las Americas  
Roosevelt  
San Francisco  
Somerset  
South Beach  
Union Square

## A1 EVENING

5th Avenue at 40th  
Aventura Mall  
Beverly Center  
Beverly Hills  
Boca Raton  
Burlington Mall  
Century City  
Cherry Creek  
Copley Place  
Fashion Island  
Fashion Valley  
Flatiron  
Forum Shops  
Georgetown  
Houston Galleria  
International Plaza  
King of Prussia  
La Plaza Mall  
Las Vegas  
Lenox Square  
Madison  
Mall at Millenia  
North Park  
Plaza Las Americas  
San Francisco  
Santa Monica Place  
Santana Row  
Scottsdale Fashion Square  
Short Hills  
Somerset  
South Beach  
Roosevelt  
Union Square  
Westchester

## A2 EVENING

Americana at Brand  
Barton Creek  
Beachwood  
Bellevue  
Bridgewater Commons  
Broadway  
Canal Place  
Cherry Hill  
Chestnut Hill  
Country Club Plaza  
Crocker Park  
Dallas Galleria  
Fair Oaks  
Galleria at Ft. Lauderdale  
Galleria at Roseville  
Garden State  
Glendale Galleria  
Hollywood & Highland  
Horton Plaza  
Keystone  
La Encantada  
Mall at Green Hills  
Menlo Park  
Miracle Mile  
Montgomery  
Northbrook  
Northstar  
Oakbrook Center  
Oak Street  
Old Orchard  
Pacific Place  
Palisades Center  
Palm Beach Gardens  
Paseo Colorado  
Pembroke Gardens  
Pentagon  
Perimeter Mall  
Perkins Rowe  
Pioneer Place  
Plaza El Segundo  
Ross Park  
Sherman Oaks  
Shops at La Cantera  
Shops at Wailea  
Soho  
South Park  
South Shore  
Stanford  
Staten Island  
The Domain  
The Falls  
The Patios at Valencia  
Third Ave  
Topanga Plaza  
Towson Town Center  
Twelve Oaks  
Tyson's Galleria  
Union Street  
Venetian  
Walnut Street  
Walt Whitman  
Waterside (Naples)  
Westside Pavillion  
Woodlands

# MASTERFUL MIX



T  
CONNOISSEUR, VISIONARY

## STENCILED MOSAIC JERSEY

- Fine knit jersey with twist yarn in modal spandex for easy care and comfort
- Great in solid and printed



JDKJF495 Earrings



EXADB435 Slide



FLB951LE Bag

JAN V-Neck Long Sleeve Top  
CEP1E924 \$88

OFF WHITE : A4, 1,200 UNITS

Fitted

- Pullover.
- Semi-sheer.
- Material: Fabric: 95% Tencel®, 5% spandex.
- Care: Washable, dry clean recommended.
- Imported.
- Lightweight, stretch fabric.
- Model is approximately 5'9" (175cm) and wearing an XS.
- Sizes: XXS-L.



A, T, H  
CONNOISSEUR, VISIONARY

## CROSS HATCH HALOS ON SILK CHIFFON

- Screens are engraved in all over layout
- Fabric is screen printed by laying screens on fabric then adding pigment
- Pieces arranged on fabric for best usage
- Crosshatch Halo motif designs were screen printed in ALL OVER layout on 10mm silk chiffon



JCDJF428 Earrings



DBQDB352 Oxford



FLB951LE Bag

TAYLUR Printed Long Button Up Shirt  
AHO1X791 \$248

OFF WHITE COMBO: A3, 1,000 UNITS

True to fit

- Front button closure.
- Material: Fabric body: 100% silk chiffon; fabric 2: 100% silk crepe de chine.
- Care: Washable, dry clean recommended.
- Imported.
- Lightweight, non-stretch fabric.
- Model is approximately 5'9" (175cm) and wearing an XS.
- Sizes: XXS-L.



# MASTERFUL MIX



H  
CONNOISSEUR, VISIONARY

## SCALLOP LEAF LACE

- This scallop lace is knit with cotton yarn to add dimension to the allover leaf pattern



JCDJF428 Earrings



OPIA Pump



KFBA36EP Clutch

MEG Sleeveless Front Feather Trim Top  
**IBK1X782 \$298**

BARE PINK: A2, 600 UNITS

BLACK: A1, 250 UNITS

Easy fit

- Back zipper closure.
- Scalloped leaf lace with feather trim.
- Material: Fabric body: 72% cotton, 28% nylon lace; fabric 2: 77% triacetate, 23% polyester satin-back crepe; fabric 3: 100% polyester mesh; lining: 100% polyester crepe de chine.
- Care: Washable.
- Imported.
- Mid-weight, non-stretch fabric.
- Model is approximately 5'9" (175cm) and wearing an XS.
- Sizes: XXS-L.



A, T, H  
CONNOISSEUR, VISIONARY

## BONDED CREPE

- This fabric is woven with twist yarn in a crepe weave than bonded together to create body. Ideal for sculpted jacket and dress style
- It can be created to be solid or double face in color

## METALLIC FRINGE

- A combination of silver, gold and black metallic yarns are sewn together into a strip to create this Metallic Fringe layered skirt



JDKJF517 Earrings



MNSDB362 Bootie



BGCA23EP Minaudiere

MARLEY Square Neck Sleeveless  
Bibbed Peplum Top

**MHF1X728 \$198**

BLACK-BARE PINK COMBO: A4,  
1,200 UNITS

True to fit

- Concealed back zipper closure.
- Materials: Fabrics 1-2: 63% polyester, 32% rayon, 5% spandex; lining: 100% polyester crepe de chine.
- Care: Washable, dry clean recommended.
- Imported.
- Mid-weight, non-stretch fabric.
- Model is approximately 5'9" (175cm) and wearing an XS.
- Sizes: XXS-L.

CHRISTAL Metallic Fringe Mini  
**ZNX3G362 \$298**

BLACK COMBO: A1, 240 UNITS

True to fit

- Pull-on.
- Material: Fabric body: 67% polyester, 33% metallic fringe; fabric 2: 100% polyester mesh; lining: 100% polyester crepe de chine.
- Care: Washable, dry clean recommended.
- Imported.
- Mid-weight, non-stretch fabric.
- Model is approximately 5'9" (175cm) and wearing an XS.
- Sizes: XXS-L.

# MASTERFUL MIX



A, H  
SOCIALITE

## QUILTED LACE

- Floral lace fabric has been quilted on top of nylon and polyfil to create fashion forward style while still keepin the wearer warm

## EYD SCROLL CLOQUE JACQUARD

- This luxurious woven jacquard was developed in collaboration with a top fabric mill and is exclusive to the BCBGMAXAZRIA brand
- This Jacquard design is created during weaving process to created the "Scroll" design with puckering called "CLOQUE" method for added texture and richness



JCDJF480 Ring



MYWDB311 Heel



EOY813ES Clutch

**ETHAN** Quilted Lace Bomber Jacket

**QIA4J189 \$398**

**BARE PINK: A1, 250 UNITS**

Fitted

- Front zipper closure.
- Front and sleeve pockets.
- Material: Fabric body: 40% viscose, 40% polyamide, 20% cotton face, 100% polyester back; fabric 2: 67% cotton, 30% nylon, 3% spandex poplin; fill: 100% polyester.
- Care: Dry clean.
- Imported.
- Mid-weight, non-stretch fabric.
- Model is approximately 5'9" (175cm) and wearing an XS.
- Sizes: XXS-L.

**ASHLIE** Short Sleeveless Dress With Pocket Details

**SVD61K25 \$338**

**BARE PINK: A2, 500 UNITS**

Fitted

- Concealed back zipper.
- Scroll cloque woven jacquard.
- Material: Fabric: 65% polyester, 33% cotton, 2% elastane; lining: 100% polyester crepe de chine.
- Care: Washable.
- Imported.
- Mid-weight, non-stretch fabric.
- Model is approximately 5'9" (175cm) and wearing an XS.
- Sizes: XXS-L.



H  
VISIONARY

## CHEVRON GEOMETRIC EMBROIDERY ON TULLE

- Creative handcraftmanship and technology come together to make this embroidery designs
- Motif/pattern is created and embroidered on to tulle mesh using an embroidery machine
- Pieces are laid out for the best placement and layout/look
- Each embroidery piece is unique to the style



JCDJF500 Bracelet



DONA Heel



FGM262EV Clutch

**CHLOE** Blocked V-Neck Flare Skirt Dress

**AOE69J57 \$698**

**BLACK BARE PINK COMBO: ARCH DOORS, 100 UNITS**

True to fit

- Concealed back zipper closure.
- Geometric chevron embroidery.
- Material: Fabric body: 100% polyester tulle; fabrics 2-3: 100% polyester mesh; fabric 4: 100% polyester crinoline; lining: 100% polyester crepe de chine.
- Care: Washable, dry clean recommended.
- Imported.
- Mid-weight, non-stretch fabric.
- Model is approximately 5'9" (175cm) and wearing an XS.
- Sizes: 0-12.

# MASTERFUL MIX



A, H  
VISIONARY, SOCIALITE

## PAISLEY LACE

- The floral paisley designs are created on a lace jacquard machine with stretch for comfort and best fit



JDKJF517 Earrings



EZODB433 Heel



CHF958LE Clutch

MADDY Long Sleeve Cold Shoulder Lace Top

**UUF1X807 \$148**

BLACK: A4, 1,400 UNITS

BARE PINK: TOP 25 DOORS, 350 UNITS

WHITE: A3, 1,300 UNITS

True to fit

- Pullover.
- Material: Self and contrast: 98% polyester, 2% spandex; Lining 1 and 2: 80% polyester, 20% spandex.
- Care: Machine wash.
- Imported.
- Mid-weight, stretch lace fabric.
- Model is approximately 5'9" (175cm) and wearing an XS.
- Sizes: XXS-L.

KEY INVESTMENT



A, H  
CONNOISSEUR, VISIONARY

## SATIN BACK CREPE

- Double faced fabric where one side is CREPE weave and the other side is smooth SATIN weave
- Either side of this fabric can be used
- This satin back crepe is woven with "triacetate" blend which is comfortable to wear and has beautiful hand feel and drape



JDKJF517 Earrings



MNMEB004 Heel



CHF958LE Clutch

MARISOL Off Shoulder Blouson Sleeve Shirt Tail Back Top

**VPX1X965 \$158**

BLACK: A4, 1,600 UNITS

BARE PINK: A4, 1,500 UNITS

ELM: A3, 1,100 UNITS

SMOKE: A4, 1,339 UNITS

Easy fit

- Pullover.
- Material: Fabric: 77% triacetate, 23% polyester crepe-back satin.
- Care: Washable, day clean recommended.
- Imported.
- Mid-weight, non-stretch fabric.
- Model is approximately 5'9" (175cm) and is wearing an XS.
- Sizes: XXS-L.

KEY INVESTMENT



# MASTERFUL MIX



H, X  
SOCIALITE

JOSA Metallic Geometric Relief  
Jacquard Fitted Skirt

**BQU3F748 \$198**

BLACK COMBO: A4, 1,000 UNITS

GARDENIA COMBO: A2, 700 UNITS

Fitted

- Pull-on.
- Material: Fabric: 86% rayon, 14% nylon, 5% polyester, 3% spandex, 3% metallic knit jacquard.
- Care: Washable, dry clean recommended.
- Imported.
- Mid-weight, stretch-knit fabric.
- Hits mid-thigh.
- Model is approximately 5'9" (175cm) and wearing an XS.
- Sizes: XXS-L.

KEY INVESTMENT

## METALLIC GEOMETRIC RELIEF JACQUARD

- These styles are a mix of rayon and nylon/spandex which gives them a tremendous amount of stretch for a comfortable fit that hugs the body
- The unique layouts are programmed into the knitting machines by hand and special care is taken to ensure the designs are flattering on the form
- Worked in relief double jacquard, this knit is actually two layers of knitting interlocked to create a strong fabric with intricate patterning
- On the face of the garment there are small holes that create a subtle texture and through with you can see the backing or second layer
- The addition of a metallic yarn, elevates these styles, giving them a dressier feel



JDKJF516 Earrings



MNSDB362 Bootie



BGCA23EP Minaudiere

# MASTERFUL MIX



H, X  
VISIONARY

## STRIPE FLORAL MESH LACE

- This scallop lace is knit with cotton yarn to add dimension to the stripe floral mesh pattern



JDKJF517 Earrings



CMV844EV Clutch



PDF135HB Boots

**KENZIE** Lace Crew Neck Long Sleeve Top  
**VKU1X671 \$198**  
**WHITE: A1, 250 UNITS**  
 True to fit  
 - Back neck button closure.  
 - Striped floral lace with scalloped trim.  
 - Material: Fabric: 60% cotton, 40% nylon lace; fabric 2: 100% polyester mesh.  
 - Care: Washable, dry clean preferred.  
 - Imported.  
 - Mid-weight, non-stretch fabric.  
 - Model is approximately 5'9" (175cm) and wearing an XS.  
 - Sizes: XXS-L.



A, H  
URBAN ROCKER

## ESSENTIAL DOUBLE WEAVE

- Lighter double weave suiting fabric
- This fabric is great for tailoring jackets, pants and dresses



JDKJF510 Ring



FIMDB014 Heel



CHF958LE Clutch

**MARCELA** Blocked Slim Fit Shirt  
**EUP1X768 \$198**  
**BLACK: A1, 250 UNITS**  
 True to fit  
 - Front button closure.  
 - Corded scroll lace with striped georgette trim.  
 - Material: Fabric: 55% viscose, 26% cotton, 19% nylon lace; fabric 2: 100% polyester georgette; fabric 3: 100% polyester mesh.  
 - Care: Washable, dry clean recommended.  
 - Imported.  
 - Mid-weight, non-stretch fabric.  
 - Model is approximately 5'9" (175cm) and wearing an XS.  
 - Sizes: XXS-L.

# MASTERFUL MIX



H  
CONNOISSEUR, VISIONARY

**BRYNNE** Long Sleeve Turtleneck Top

**SKW1X469 \$88**

**BLACK COMBO: A4, 1,570 UNITS**

Fitted

- Pullover.
- Velour striped jersey.
- Material: Fabric: 55% acrylic, 35% rayon, 10% wool.
- Care: Washable, dry clean recommended.
- Imported.
- Lightweight, stretch knit fabric.
- Model is approximately 5'9" (175cm) and wearing an XS.
- Sizes: XXS-L.

## VELOUR STRIPE JERSEY

- This striped jersey is made on a jacquard machine using velour to create dimension and texture
- Wool content keeps you warm, while rayon provides most comfortable wear



JCDJF480 Ring



MNSDB362 Bootie



CHF958LE Clutch



A, H  
URBAN ROCKER

**ANAIS** Long Sleeve Asymmetric Neck Top

**SKW1X766 \$98**

**BORDEAUX COMBO: A2, 850 UNITS**

**CREAM: A4, 1,200 UNITS**

True to fit

- Pullover.
- Velour striped jersey.
- Material: Fabric: 55% acrylic, 35% rayon, 10% wool.
- Care: Washable, dry clean recommended.
- Imported.
- Lightweight, stretch knit fabric.
- Model is approximately 5'9" (175cm) and wearing an XS.
- Sizes: XXS-L.

## VELOUR STRIPE JERSEY

- This striped jersey is made on a jacquard machine using velour to create dimension and texture
- Wool content keeps you warm, while rayon provides most comfortable wear



JCDJF480 Ring



EXADB339 Loafer



FLB951LE Satchel

KEY INVESTMENT

KEY INVESTMENT

# TAILOR MADE



T  
CONNOISSEUR, VISIONARY

**CONNER** Belted Wrap Blazer  
**JVY4J339 \$298**

**BLACK: TOP 40 DOORS, 400 UNITS**  
 True to fit

- Adjustable waist tie closure.
- Front pockets.
- Material: Fabric body: 100% polyester woven jacquard; fabric 2: 65% rayon, 30% nylon, 5% spandex ponte; lining: 100% polyester crepe de chine.
- Care: Washable, dry clean recommended.
- Imported.
- Mid-weight, non-stretch fabric.
- Model is approximately 5'9" (175cm) and wearing an XS.
- Sizes: XXS-L.

## PATCHWORK GEOMETRIC JACQUARD

- Jacquards are placed in random pairs
- Geometric patchwork design is creating during weaving process to make this fabric



JCDJF448 Earrings



EZODB433 Heel



FLB951LE Bag

**ERNEST** Wide Leg Cropped Pant  
**JVY2G686 \$178**

**BLACK: TOP 40 DOORS, 350 UNITS**  
 True to fit

- Front zip fly with hook-and-bar and button closures.
- Material: Fabric: 100% polyester woven jacquard; lining: 100% polyester crepe de chine.
- Care: Washable, dry clean only.
- Imported.
- Mid-weight, non-stretch fabric.
- Mid-rise waist.
- Model is approximately 5'9" (175cm) and is wearing an XS.
- Sizes: XXS-L.



A, H  
CONNOISSEUR, VISIONARY

**DEANNA** Long Vest Dress  
**RND65J91 \$368**

**BLACK: TOP 20 DOORS, 200 UNITS**  
 True to fit

- Front button with hook-and-bar closure.
- Material: Fabric: 80% polyester, 14% rayon, 6% spandex; lining: 100% polyester twill.
- Care: Washable.
- Imported.
- Mid-weight, non-stretch fabric.
- Model is approximately 5'9" (175cm) and is wearing an XS.

## ESSENTIAL DOUBLE WEAVE

- Lighter double weave suiting fabric
- This fabric is great for tailoring jackets, pants and dresses



XCRBC313 Belt



OPIA Pump



CHF958LE Clutch



# TAILOR MADE



T  
VISIONARY

## SATIN BACK CREPE

- Double faced fabric where one side is CREPE weave and the otherside is smooth SATIN weave
- Either side of this fabric can be used
- This satin back crepe is woven with "triacetate" blend which is comfortable to wear and has beautiful hand feel and drape



JDKJF495 Earrings



OPIA Pump



FLB951LE Bag

SVETLANA Long Overlay Under Crop Top

LMQ1W562 \$178

BLACK: A4, 1,300 UNITS

Easy fit

- Pullover.
- Material: Self: Crepe – triacetate, polyester.
- Care: Washable, dry clean recommended.
- Imported.
- Lightweight, non-stretch fabric.
- Model is approximately 5'9" and is wearing an XS.
- Sizes: XXS-L.

# GOLD STANDARD



H  
VISIONARY

**BRINNE** Long Sleeve Turtleneck Top  
**APS1X690 \$88**  
**BLACK-GUNMETAL COMBO: A4, 1,800 UNITS**  
**BLACK-GOLD COMBO: A2, 900 UNITS**  
**Fitted**  
 - Pullover.  
 - Ribbed knit.  
 - Material: Fabric: 51% polyester, 28% rayon, 11% nylon, 10% metallic.  
 - Care: Washable, dry clean recommended.  
 - Imported.  
 - Lightweight, stretch fabric.  
 - Model is approximately 5'9" (175cm) and wearing an XS.  
 - Sizes: XXS-L.

## VARIGATED METALLIC STRIPE RIB

- This knit fabric is created with metallic yarn for shine and added dimension
- This stretch rib has soft hand and comfortable to wear

## METALLIC FRINGE

- A combination of silver, gold and black metallic yarns are sewn together into a strip to create this Metallic Fringe layered skirt



JDKJF517 Earrings



CMV844EV Clutch



MNSDB001 Boot

**CHRISTAL** Metallic Fringe Mini  
**ZNX3G362 \$298**  
**BLACK COMBO: A1, 240 UNITS**  
**True to fit**  
 - Pull-on.  
 - Material: Fabric body: 67% polyester, 33% metallic fringe; fabric 2: 100% polyester mesh; lining: 100% polyester crepe de chine.  
 - Care: Washable, dry clean recommended.  
 - Imported.  
 - Mid-weight, non-stretch fabric.  
 - Model is approximately 5'9" (175cm) and wearing an XS.  
 - Sizes: XXS-L.



A, H  
VISIONARY

**MARIE** Metallic Pleated Skirt  
**OJZ3G358 \$228**  
**METALLIC MULTI: A1, 250 UNITS**  
**True to fit**  
 - Pull-on.  
 - Material: Fabrics 1-4: 100% polyester foiled georgette; lining: 100% polyester crepe de chine.  
 - Care: Washable, dry clean recommended.  
 - Imported.  
 - Mid-weight, non-stretch fabric.  
 - Elasticized waistband.  
 - Midi-length.  
 - Model is approximately 5'9" (175cm) and wearing an XS.  
 - Sizes: XXS-L.

## SUNBURST PLEATING

- Using 100% polymer gauze fabric for a pleating technique is ideal because pleats best hold their shape, crispness and longevity in polyester, which provides a flattering drape.
- Any natural fibers (silks, cottons, wools or blends of these fibers) will start losing the pleats even at the first sign of moisture.



HB102642 Floppy Hat



MNSDB362 Bootie



CHF958LE Clutch

## KEY INVESTMENT

# GOLD STANDARD



H  
SOCIALITE, VISIONARY

BLAKE Long Sleeve Turtleneck  
Lace Bodysuit

**AVR1X780 \$148**

BLACK: A4, 1,480 UNITS

OFF WHITE: A2, 800 UNITS

Fitted

- Concealed back zipper closure.
- Material: Fabric body: 83% nylon, 17% spandex lace; Lining: 75% acetate, 20% nylon, 5% spandex matte jersey.
- Care: Machine wash.
- Imported.
- Lightweight, stretch fabric.
- Model is approximately 5'9" (175cm) and wearing an XS.
- Sizes: XXS-L.

## FLORAL PAISLEY STRETCH LACE

- The floral paisley designs are created on a lace jacquard machine with stretch for comfort and best fit

## SUNBURST PLEATING

- Using 100% polymer gauze fabric for a pleating technique is ideal because pleats best hold their shape, crispness and longevity in polyester, which provides a flattering drape
- Any natural fibers (silks, cottons, wools or blends of these fibers) will start losing the pleats even at the first sign of moisture



JDKJF510 Ring



EZODB433 Heel



UKHA13EP Minaudiere

ZANA Tiered Pleated Skirt

**OJZ3F558 \$158**

GOLD-BLACK COMBO: A4 DOORS ONLY,  
500 UNITS

Easy fit

- Pull-on.
- Metallic foiling.
- Material: Fabric: 100% polyester foiled georgette; lining: 100% polyester crepe de chine.
- Care: Washable, dry clean recommended.
- Imported.
- Mid-weight, non-stretch fabric.
- Model is approximately 5'9" (175cm) and wearing an XS.
- Sizes: XXS-L.



A  
CONNOISSEUR, VISIONARY

VALARI Ruffle Sleeve Hem Hi-Lo Top

**DQO1X792 \$198**

NAVY/BRONZE: A4, 1,200 UNITS

Easy fit

- Pullover.
- Material: Fabric: 47% polyester, 38% cotton, 15% metallic woven jacquard; lining: 100% polyester crepe de chine.
- Care: Washable, dry clean recommended.
- Imported.
- Mid-weight, non-stretch fabric.
- Model is approximately 5'9" (175cm) and wearing an XS.
- Sizes: XXS-L.

## METALLIC JACQUARD

- Metallic Dobby Ottoman w/seqn on striped trims and 2x2 rib
- Cross yarns are woven with looser tension
- Ribbed texture is woven with metallic yarn in a jacquard loom to create richness and dimension



JDKJF516 Earrings



EZODB433 Heel

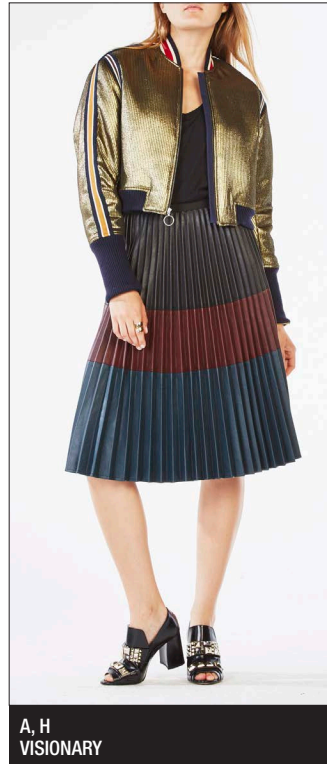


UKHA13EP Minaudiere

## KEY INVESTMENT

## KEY INVESTMENT

# GOLD STANDARD



A, H  
VISIONARY

**METALLIC JACQUARD**

- Metallic Dobby Ottoman w/seqn on striped trims and 2x2 rib
- Cross yarns are woven with looser tension
- Ribbed texture is woven with metallic yarn in a jacquard loom to create richness and dimension



JDKJF510 Ring



MNSDB308 Heel



FLB951LE Bag

ANDREAS Metallic Jacquard Bomber

**DQO4J355 \$368**

GOLD: A1, 250 UNITS

True to fit

- Front zipper closure.
- Metallic woven jacquard with striped ribbed-knit trims.
- Material: Fabric body:47% polyester, 38% cotton, 15% metallic; fabric 2: 97% cotton, 3% spandex canvas; lining: 67% cotton, 30% nylon, 3% spandex.
- Care: Washable.
- Imported.
- Mid-weight, non-stretch fabric.
- Hits above the knee.
- Model is approximately 5'9" (175cm) and is wearing an XS.
- Sizes: XXS-L.



# SHIMMER & SHINE



T, H  
CONNOISSEUR, VISIONARY

## METALLIC STRIPE KNIT JERSEY

- This knit fabric is created with metallic yarn for shine and added dimension
- This stretch textured jacquard has soft hand and comfortable to wear

## ESSENTIAL DOUBLE WEAVE

- Lighter double weave suiting fabric
- This fabric is great for tailoring jackets, pants and dresses



JSSJF494 Necklace



DBQDB352 Oxford



CMV844EV Clutch

**BRINNE** Long Sleeve Turtleneck Top  
**AQA1X767 \$88**

**SILVER COMBO: A3, 1,000 UNITS**  
**DEEP ROYAL BLUE COMBO: AA DOORS ONLY, 200 UNITS**

- Fitted**
- Pullover.
  - Material: Fabric: 86% nylon, 8% metallic, 6% spandex knit jacquard; fabric 2: 92% polyester, 8% spandex jersey.
  - Care: Washable.
  - Imported.
  - Lightweight, stretch fabric.
  - Model is approximately 5'9" (175cm) and is wearing an XS.
  - Sizes: XXS-L.

**BENTLEY** Wide Leg Tuxedo Pant  
**RND2G697 \$178**

**BLACK: A3, 980 UNITS**

**True to fit**

- Front zip fly with hook-and-bar and button closures.
- Front and back pockets.
- Material: Fabric body: 80% polyester, 14% rayon, 6% spandex suiting; fabric 2: 100% polyester satin; lining: 100% polyester crepe de chine.
- Care: Washable, dry clean recommended.
- Imported.
- Mid-weight, non-stretch fabric.
- Model is approximately 5'9" (175cm) and is wearing a size 2.



T, H  
CONNOISSEUR, VISIONARY

## MARLED RIB

- This high quality wool/nylon blend has the warmth of wool without being heavy or harsh
- It's soft hand and drape make it enjoyable to wear and flattering to the body
- The rib construction allows the garment to hug the body while providing a subtle, yet flattering, vertical line
- The addition of lycra also contributes to the slim fit and helps the garment maintain its shape over time



JCDJF480 Ring



MNSDB308 Heel



FLB951LE Bag

**OMAR** Marled Rib Pant  
**BPF2G687 \$228**

**MARLED BLACK COMBO: TOP 40 DOORS, 400 UNITS**

**Fitted**

- Pull-on.
- Material: Fabric: 46% nylon, 28% merino wool, 24% acrylic, 2% spandex.
- Care: Washable dry clean recommended.
- Imported.
- Mid-weight, stretch-knit fabric.
- High-rise, elasticized waistband.
- Model is approximately 5'9" (175cm) and is wearing an XS.
- Sizes: XXS-L.

KEY INVESTMENT

# SHIMMER & SHINE



H  
CONNOISSEUR, VISIONARY

## METALLIC SHIMMER JERSEY

- This knit fabric is created with metallic yarn for shine and added dimension
- This stretch knit jacquard has soft hand and comfortable to wear



JDKJF526 Ring



BGCA23EP Minaudiere



MNSDB001 Boot

COLEEN Blouson Sleeve Pleated Skirt Crew Neck Dress

**AIX60L78 \$268**

GOLD-NAVY COMBO: **A2, 589 UNITS**

True to fit

- Back neck button closure.
- Material: Fabric: 83% nylon, 17% metallic jersey; lining: 92% polyester, 8% spandex jersey.
- Care: Washable, dry clean recommended.
- Imported.
- Mid-weight, non-stretch fabric.
- Model is approximately 5'9" (175cm) and wearing an XS.
- Sizes: XXS-L.



A, H  
SOCIALITE

## METALLIC YARN

- Metallic yarn is pre-twisted with rayon yarn to create shine appearance
- Stitch is in 2x2 Rib which allows body con shape and textural appearance



JDKJF575 Earrings



BGCA23EP Minaudiere



PDF135HB Boots

MACKI V-Neck Long Sleeve Tunic Dress

**LPK1X784 \$228**

BRONZE COMBO: **A4, 1,500 UNITS**

True to fit

- Pullover.
- Material: Fabric: 71% rayon, 19% polyester, 10% metallic.
- Care: Washable.
- Imported.
- Mid-weight, stretch knit fabric.
- Hits above the knee.
- Model is approximately 5'9" (175cm) and is wearing an XS.
- Sizes: XXS-L.

## KEY INVESTMENT

# FINELY KNIT



A, H  
URBAN ROCKER

## MARLED JERSEY

- This high quality wool/nylon blend has the warmth of wool without being heavy or harsh
- It's soft hand and drape make it enjoyable to wear and flattering to the body
- On some styles, the addition of sleek faux-leather details contrast the supple face of the knit, giving these styles a chic edge

## TWILL PONTE

- Knit ponte with TWILL texture creates texture to this knit fabric
- Great for leggings



JCDJF428 Earrings



MNSDB004 Bootie



FLB951LE Satchel

DENICE Oversized Boxy Pullover  
SCN1X698 \$178

MARLED BLACK COMBO: A4, 900 UNITS

Loose fit

- Pullover.
- Material: Fabric: 45% nylon, 30% merino wool, 25% acrylic.
- Care: Washable dry clean recommended.
- Imported.
- Mid-weight, stretch fabric.
- Model is approximately 5'9" (175cm) and wearing an XS.
- Sizes: XS/S and M/L.

KEY INVESTMENT

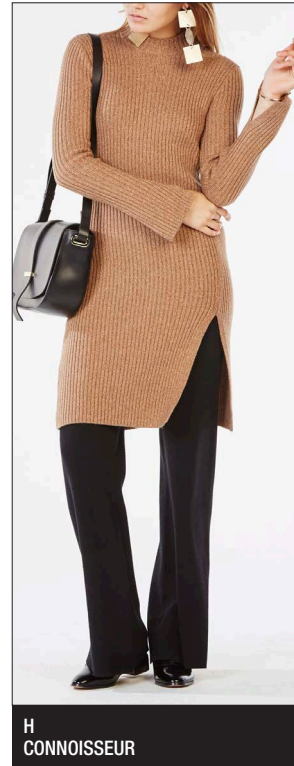
BOBBY Side Snap Leggings  
ERQ2G690 \$158

BLACK: A4, 1,600 UNITS

Fitted

- Pull-on with side snaps.
- Material: Fabric: 76% rayon, 21% nylon, 3% spandex ponte.
- Care: Washable, dry clean recommended.
- Imported.
- Mid-weight, stretch knit fabric.
- Mid-rise, elasticized waistband.
- Model is approximately 5'9" (175cm) and wearing an XS.
- Sizes: XXS-L.

KEY INVESTMENT



H  
CONNOISSEUR

## MARLED RIB

- This high quality wool/nylon blend has the warmth of wool without being heavy or harsh
- It's soft hand and drape make it enjoyable to wear and flattering to the body
- The rib construction allows the garment to hug the body while providing a subtle, yet flattering, vertical line



JCDJF434 Earrings



EXADB339 Loafer



FLB952LE Crossbody

GWYN Marled Rib Dress  
BOG68F61 \$198

MARLED TOFFEE COMBO: TOP 40

DOORS, 700 UNITS

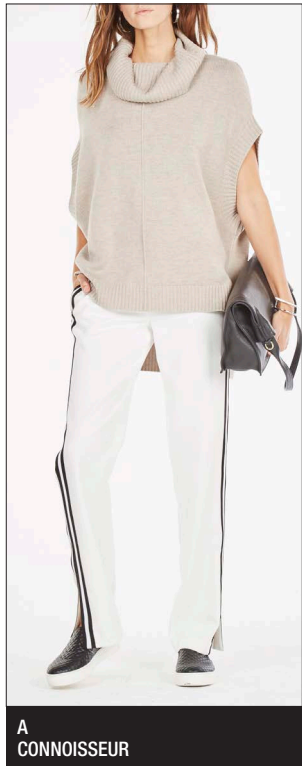
MARLED BLACK COMBO: A4, 1,400 UNITS

Fitted

- Pullover.
- Material: Fabric: 45% nylon, 30% merino wool, 25% acrylic.
- Care: Washable.
- Imported.
- Mid-weight, stretch knit fabric.
- Model is approximately 5'9" (175cm) and wearing an XS.
- Sizes: XXS-L.

KEY INVESTMENT

# FINELY KNIT



A  
CONNOISSEUR

## MERINO WOOL NYLON BLEND

- This high quality wool/nylon blend has the warmth of wool without being heavy or harsh
- It's soft hand and drape make it enjoyable to wear and flattering to the body
- Sleek faux-leather details contrast the supple face of the knit, giving these styles a chic edge



JCDJF443 Cuff



MNGDB290 Sneaker



CHF943LE Hobo

**CORINA** Oversized Boxy Pullover  
**BXE1X698 \$178**

**LIGHT HAZELNUT: A4, 700 UNITS**

Oversized fit

- Pullover.
- Material: Fabric: 45% nylon, 30% merino wool, 25% acrylic.
- Care: Washable, dry clean recommended.
- Imported.
- Mid-weight, stretch knit fabric.
- Model is approximately 5'9" (175cm) and is wearing an XS/S.
- Sizes: XS/S and M/L

KEY INVESTMENT



A, H  
URBAN ROCKER

## METALLIC CABLE

- Lurex and a merino wool blend are knit together in mixed cable stitches for dimension and texture



JDKJF507 Necklace



OPIA Pump



BUQ958LE Clutch

**ARLENE** Cold Shoulder Pullover  
**QEX1Y013 \$278**

**CHAMPAGNE COMBO: A3, 1,155 UNITS**

Fitted

- Pullover.
- Material: Fabric: 40% polyester, 40% metallic, 20% merino wool, 20% acrylic.
- Care: Washable dry clean recommended.
- Imported.
- Mid-weight, stretch-knit fabric.
- Model is approximately 5'9" and is wearing an XS.
- Sizes: XXS-L.

KEY INVESTMENT



# FINELY KNIT



A, H  
CONNOISSEUR

## METALLIC RIB

- Lurex and a merino wool blend are knit together in half cardigan rib stitch to give dimension and texture



JCDJF480 Ring



MNMEB004 Heel



BGCA23EP Minaudiere

**KALIA** Funnel Cardi-Vest  
**FHU4J344 \$298**  
 CHAMPAGNE COMBO: **A2, 630 UNITS**  
 True to fit  
 - Front zipper closure.  
 - Material: Self: 40% polyester, 20% metallic, 20% merino wool, 20% acrylic.  
 - Care: Washable, dry clean recommended.  
 - Imported.  
 - Mid-weight, stretch knit fabric.  
 - Model is approximately 5'9" (175cm) and wearing an XS.  
 - Sizes: XXS-L.



A, T, H  
CONNOISSEUR, VISIONARY

## CROSSHATCH HALO JACQUARD IN EYELASH YARN

- This style is knit with a double jacquard technique
- The pattern is on the face of the garment as well as the inside
- We have made this cardigan reversible, giving the customer two unique options

## TWILL PONTE

- Knit ponte with TWILL texture creates texture to this knit fabric
- Great for leggings



JDKJF510 Ring



DBQDB352 Oxford



FLB951LE Bag

**ANNIA** Crosshatch Halos Coat  
**NPS4J264 \$298**  
 MARLED BLACK COMBO: **A1, 300 UNITS**  
 Easy fit  
 - Reversible.  
 - Crosshatch halos eyelash sweater jacquard.  
 - Material: Fabric: 88% nylon, 12% rayon.  
 - Care: Washable, dry clean recommended.  
 - Imported.  
 - Mid-weight, non-stretch fabric.  
 - Model is approximately 5'9" (175cm) and wearing an XS.  
 - Sizes: XXS-L.

**DOMINICK** Side Snap Leggings  
**ERQ2G700 \$158**  
 HEATHER LIGHT TART: **A4, 1,500 UNITS**  
 HEATHER DARK FATIGUE: **A2, 800 UNITS**  
 Fitted  
 - Pull-on with side snaps.  
 - Material: Fabric: 76% rayon, 21% nylon, 3% spandex ponte.  
 - Care: Washable, dry clean recommended.  
 - Imported.  
 - Mid-weight, stretch knit fabric.  
 - Model is approximately 5'9" (175cm) and wearing an XS.  
 - Sizes: XXS-L.

## KEY INVESTMENT

# PONCHO



A  
SOCIALITE

**COLOR-BLOCKED PONCHO**

- Color-block twill weave



JCDJF500 Bracelet



MNGDB290 Sneaker



FLB951LE Bag

Color-Blocked Poncho  
**BG464600 \$68**  
GLACIER GREY: A4, 614 UNITS  
BLACK: A4, 837 UNITS

Easy fit

- Wraparound.
- Reversible color-blocked poncho with fringe trim.
- Material: 100% acrylic.
- Washable.
- Imported.
- Mid-weight, non-stretch fabric.
- Measures approximately 54" x 59".
- Sizes: One size.

# EASY ELEGANCE



**MARLED JERSEY WOOL BLEND**

- This high quality wool/nylon blend has the warmth of wool without being heavy or harsh
- It's soft hand and drape make it enjoyable to wear and flattering to the body
- On some styles, the addition of sleek faux-leather details contrast the supple face of the knit, giving these styles a chic edge



JCDJF434 Earrings



MNSDB334 Loafer



CHF928LE Bag

A, H  
SOCIALITE

DAHNYA Draped Side Dress

SCN68F61 \$228

MARLED BLACK COMBO: A4, 1,235 UNITS

Easy fit

- Pullover.
- Material: Fabrics 1-2: 45% nylon, 30% merino wool, 35% acrylic; fabric 3: 100% polyurethane faux leather.
- Care: Washable, dry clean recommended.
- Imported.
- Mid-weight, stretch knit fabric.
- Model is approximately 5'9" (175cm) and wearing an XS.
- Sizes: XXS-L.

KEY INVESTMENT



**HIGH TWIST JERSEY**

- Knit crepe made with Hightwist yarns, allows for better drape, fluidity, and crepy hand



JDKJF526 Ring



CHF947LE Crossbody



PDF135HB Boot

A  
SOCIALITE

JAENA Long Sleeve A-Line Dress

JYX67F57 \$228

DARK MIDNIGHT: A4, 1,200 UNITS

Easy fit

- Front hook-and-eye closure.
- Material: Self: Jersey – polyester, spandex.
- Contrast: 1. Faux suede – polyester, spandex. 2. Pleather – polyurethane face, polyester back.
- Unlined.
- Care: Washable.
- Imported.
- Lightweight, stretch knit fabric.
- Model is approximately 5'9" (175cm) and wearing an XS.
- Sizes: XXS-L.

KEY INVESTMENT

# ON THE SCENE



A, T, H  
SOCIALITE

## TILED STRIPE LACE

- The tile lace design are created on a lace jacquard machine with stretch for comfort and best fit



JCDJF428 Earrings



MNSDB004 Bootie



BGCA23EP Minaudiere

DAINA Long Sleeve Round  
Neck Dress With Inset Mesh

**SEA60K11 \$198**

**DARK TEAL: A4, 900 UNITS**

Fitted

- Back neck button closure.
- Material: Fabric body: 95% polyester, 5% spandex lace; fabric 2: 95% polyester, 5% spandex mesh; lining: 92% polyester, 8% spandex.
- Care: Washable.
- Imported.
- Mid-weight, stretch fabric.
- Model is approximately 5'9" (175cm) and wearing an XS.
- Sizes: XXS-L.

KEY INVESTMENT



# FESTIVE TEXTURES



T, H  
SOCIALITE

## PAISLEY LACE

- The floral paisley designs are created on a lace jacquard machine with stretch for comfort and best fit



JDKJF495 Earrings



FIMDB014 Heel



FLB952LE Crossbody

**GUINEVERE** Ruffle Lace Dress  
**UUF62K23 \$228**

OFF WHITE: A4, 953 UNITS

True to fit

- Back neck button closures.
- Material: Fabrics 1-2: 98% polyester, 2% spandex lace; fabric 3: 80% polyester, 20% spandex mesh; lining: 92% polyester, 8% spandex jersey.
- Care: Washable.
- Imported.
- Mid-weight, stretch fabric.
- Model is approximately 5'9" (175cm) and wearing an XS.
- Sizes: XXS-L.



H  
SOCIALITE

## CAMEO SCALLOP LACE

- This "scalloped edge" lace has been created in collaboration with our top lace mill to fit individual style
- Our design and fabric development teams partnered with the best mill to create this exclusive lace design
- The result can be seen in the unique styles that encompass the DNA of the BCBGMAXAZRIA



JDKJF516 Earrings



DONA Heel



UKHA13EP Minaudiere

**KAILIN** Asymmetrical Hem  
Ruffle Bib Dress

**AGC69J01 \$498**

BLACK: ARCH DOORS, 87 UNITS

True to fit

- Concealed back zipper closure.
- Detachable slip lining with adjustable straps.
- Material: Fabric body: 73% nylon, 27% cotton lace; fabric 2: 100% polyester mesh; lining: 100% polyester georgette.
- Care: Washable, dry clean recommended.
- Imported.
- Mid-weight, non-stretch fabric.
- Asymmetrical hemline.
- Model is approximately 5'9".
- Sizes: 0-12.

# FESTIVE TEXTURES



A, T, H  
SOCIALITE

DYANNE Long Sleeve

Asymmetric Neck Top

**VPX61K22 \$338**

ALABASTER: TOP 80 DOORS,  
620 UNITS

Easy fit

- Pullover.
- Material: Fabric body: 77% triacetate, 23% polyester satin-back crepe; lining: 100% polyester crepe de chine.
- Care: Washable.
- Imported.
- Mid-weight, non-stretch fabric.
- Model is approximately 5'9" (175cm) and is wearing an XS.

## CRYSTAL EMBELLISHMENTS

- A combination of beads are sewn on to the base fabric
- Clusters of motifs are evenly paced onto the garment creating a dimensional pattern
- Crystal beads are sewn on the fabric to created this unique abstract design with the crystal, creating "embellished" dressed up look to the styles



JCDJF428 Earrings



DONA Sandal



BGCA23EP Minaudiere



A, H  
SOCIALITE

LYNZIE Sleeveless Pleated  
Shift Dress

**LMQ61K03 \$368**

SLATE: A4, 920 UNITS

Easy fit

- Back neck button closure.
- Material: Fabric body: 77% triacetate, 23% polyester satin-back crepe; lining: 100% polyester crepe de chine.
- Care: Washable.
- Imported.
- Mid-weight, non-stretch fabric.
- Model is approximately 5'9" (175cm) and is wearing an XS.
- Sizes: XXS-L.

## CRYSTAL EMBELLISHMENTS

- A combination of beads are sewn on to the base fabric
- Clusters of motifs are evenly paced onto the garment creating a dimensional pattern
- Crystal beads are sewn on the fabric to created this unique abstract design with the crystal, creating "embellished" dressed up look to the styles



JDKJF575 Earrings



MYWDB311 Heel



CMV844EV Clutch

# FESTIVE TEXTURES



H, X  
SOCIALITE

## VELOUR STRIPE JERSEY

- This striped jersey is made on a jacquard machine using velour to create dimension and texture
- Wool content keeps you warm, while rayon provides most comfortable wear



JDKJF516 Earrings



DONA Heel



UKHA13EP Minaudiere

JERRI Long Sleeve Banded Dress

**SKW65J13 \$178**

BLACK COMBO: A4, 1,285 UNITS

BORDEAUX COMBO: A4, 1,100 UNITS

True to fit

- Pullover.
- Material: Fabric body: 55% acrylic, 35% rayon, 10% wool jersey; fabric 2: 80% polyester, 20% spandex mesh; lining: 92% polyester, 8% spandex jersey.
- Care: Washable.
- Imported.
- Mid-weight, stretch fabric.
- Model is approximately 5'9" (175cm) and wearing an XS.
- Sizes: XXS-L.

KEY INVESTMENT



A, H  
CONNOISSEUR, VISIONARY

## CROSS HATCH HALOS BURNOUT

- Screens are engraved in all over layout
- Fabric is screen printed by laying screens on fabric then adding pigment
- Pieces arranged on fabric for best usage
- Crosshatch halo design is achieved by burning off the velvet face in the crosshatch halo design on this SILK/RAYON velvet fabric to achieve added dimension and texture



JDKJF517 Earrings



CMV844EV Clutch



MQWDB001 Boot

LYDIAH Blouson Sleeve Dress

With Ruffled Hem

**EMT60K19 \$398**

BLACK COMBO: A1, 200 UNITS

True to fit.

- Concealed back zipper closure.
- Material: Fabric body: 54% silk, 46% rayon velvet; fabric 2: 100% polyester tulle; fabric 3: 100% polyester georgette; lining: 100% polyester crepe de chine.
- Care: Washable, dry clean recommended.
- Imported.
- Mid-weight, non-stretch fabric.
- Model is approximately 5'9" (175cm) and wearing an XS.
- Sizes: XXS-L.

# FESTIVE TEXTURES



H, X  
URBAN ROCKER

**STRETCH DOUBLE CREPE**

- This Crepe Fabric is woven with hi-twist yarn for texture and bonded together to add body/weight
- This fabric is available solid and/or bi-color [ two tones]



JCDJF443 Cuff



MNSDB004 Bootie



CHF958LE Clutch

**NIKKI** Asymmetrical Peplum Zip Dress  
**BYM60H18 \$298**

BLACK: A4, 1,000 UNITS

Fitted

- Front and back zipper closures.
- Material: Self: Crepe – polyester, spandex.
- Lining: Stretch crepe de chine – polyester.
- Care: Washable, dry clean recommended.
- Imported.
- Mid-weight, stretch fabric.
- Seamed waistline.
- Model is approximately 5'9" (175cm) and wearing an XS.
- Sizes: XXS-L.



H  
URBAN ROCKER

**STRIPED FRINGE JACQUARD**

- This engineered fringe jacquard has been specifically woven to create flounce and movement on every garment



JCDJF448 Earrings



DONA Heel



BGCA23EP Minaudiere

**ANIKI** Fringe Double Breasted Jacket Dress

**FKF62K86 \$368**

BLACK: A4, 950 UNITS

True to fit

- Front button with hook-and-bar closure.
- Material: Fabric body: 68% polyester, 32% cotton woven jacquard; fabric 2: 100% polyester satin; fabric 3: 65% rayon, 30% nylon, 5% spandex ponte; lining: 100% polyester twill.
- Care: Washable.
- Imported.
- Mid-weight, non-stretch fabric.
- Model is approximately 5'9" (175cm) and wearing an XS.
- Sizes: XXS-L.

**KEY INVESTMENT**

# SCENE STEALER



T, H  
SOCIALITE

## GLITTER SEQUIN ON STRETCH MESH

- The sequins have a special finish with a glitter effect, giving texture and brilliance to the style
- The sequins are embroidered on to stretch mesh



JDKJF517 Earrings



EZODB433 Heel



UKHA13EP Minaudiere

### BETTY Short Sleeved Sequin Dress

**SFU60K26 \$338**

BLACK: A1, 160 UNITS

True to fit

- Glitter sequin on stretch mesh
- Round neck
- Defined waist
- Exposed zip closure and concealed hook-and-eye closure at back
- Material: Fabric: 95% polyester, 5% spandex; Lining: 80% polyester, 20% spandex
- Care: Hand wash
- Imported
- Size small measures approximately 40.25" from shoulder to hem
- Model is approximately 5'9" (175cm) and wearing an XS.
- Sizes: XXS-L.



H, X  
SOCIALITE

## ENGINEERED SEQUIN

- This engineered sequin fabric was created by the BCBGMAXAZRIA design team and is exclusive to the brand
- The technician carefully engineers each sequin on to the fabric to have a perfectly aligned proportion for each style
- Hundreds of thousands of individual sequins are necessary to complete each piece



JDKJF517 Earrings



MYWDB311 Heel



UKHA13EP Minaudiere

### EUNICE Long Sleeve Off-The

Shoulder Sequin Dress

**MNR62K89 \$398**

GUNMETAL COMBO: TOP 100 DOORS,  
700 UNITS

ROSE GOLD COMBO: A4, 950 UNITS

Fitted

- Pullover.
- Deco sequin embroidery.
- Material: Fabric body: 94% polyester, 6% spandex mesh; fabric 2: 80% polyester, 20% spandex mesh; lining: 92% polyester, 8% spandex.
- Care: Washable, dry clean recommended.
- Imported.
- Mid-weight, stretch fabric.
- Model is approximately 5'9" (175cm) and wearing an XS.
- Sizes: XXS-L.



# SCENE STEALER



A, T, H  
SOCIALITE, VISIONARY

## ENGINEERED SEQUIN

- This engineered sequin fabric was created by the BCBGMAXAZRIA design team and is exclusive to the brand
- The technician carefully engineers each sequin on to the fabric to have a perfectly aligned proportion for each style
- Hundreds of thousands of individual sequins are necessary to complete each piece



JDKJF516 Earrings



MNMEB004 Heel



KFBA36EP Clutch

**CATERINA** Sleeveless Sequin Dress With Feather Trim Hem

**SIA60K43 \$448**

**DARK NAVY BLACK COMBO: A4, 1,200 UNITS**

True to fit

- Concealed back zipper closure.
- Allover sequin embellishments with ostrich feather trim.
- Material: Fabric body: 100% nylon tulle; trim: 100% ostrich feather; fabric 2: 100% polyester mesh; fabric 3: 100% polyester georgette; lining: 100% polyester crepe de chine.
- Care: Washable.
- Imported.
- Mid-weight, non-stretch fabric.
- Model is approximately 5'9" (175cm) and wearing an XS.
- Sizes: XXS-L.

KEY INVESTMENT



A, H  
SOCIALITE

## LEOPARD PATTERN JACQUARD

- A cotton blend jacquard woven with raised surface in a custom leopard pattern with metallic yarn for shine



JCDJF448 Earrings



EZODB433 Heel



UKHA13EP Minaudiere

**DEDE** Asymmetrical Side Cascade Ruffle Skirt Flounce Dress

**PUH60K46 \$338**

**DARK NAVY COMBO: TOP 100 DOORS, 1,100 UNITS**

True to fit

- Concealed back zipper closure.
- Manx cloque woven jacquard.
- Material: Fabric body: 65% polyester, 33% cotton, 2% elastane; fabric 2: 100% polyester mesh; lining: 100% polyester charmeuse.
- Care: Washable, dry clean recommended.
- Imported.
- Mid-weight, non-stretch fabric.
- Model is approximately 5'9" (175cm) and wearing an XS.
- Sizes: 0-12.

# SCENE STEALER



T  
SOCIALITE

## GLITTER SEQUIN ON STRETCH MESH

- The sequins have a special finish with a glitter effect, giving texture and brilliance to the style
- The sequins are embroidered on to stretch mesh



JDKJF516 Earrings



DONA Heel



UKHA13EP Minaudiere

**GISSELLE** Sequin Spaghetti Strap Gown

**SFU60K27 \$398**

BLACK: A2, 500 UNITS

True to fit

- Concealed back zipper closure.
- Glitter sequin embellishments.
- Material: Fabric body: 95% polyester, 5% spandex; fabric 2: 80% polyester, 20% spandex mesh; lining: 100% polyester crepe de chine.
- Care: Washable, dry clean recommended.
- Imported.
- Mid-weight, stretch fabric.
- Adjustable spaghetti straps.
- Model is approximately 5'9" (175cm) and wearing an XS.
- Sizes: XXS-L.



T, H  
SOCIALITE, VISIONARY

## ENGINEERED SEQUIN

- This engineered sequin fabric was created by the BCBGMAXAZRIA design team and is exclusive to the brand
- The technician carefully engineers each sequin on to the fabric to have a perfectly aligned proportion for each style
- Hundreds of thousands of individual sequins are necessary to complete each piece



JDKJF517 Earrings



DONA Heel



PXWA26EV Clutch

**MAGDALENA** Sleeveless Sequin Gown With Tulle Ruffle Bottom Skirt

**SIA61K15 \$548**

BLACK: A3, 700 UNITS

HAZELNUT: A4, 900 UNITS

LIGHT CHAMPAGNE: ARCH DOORS, 100 UNITS

True to fit

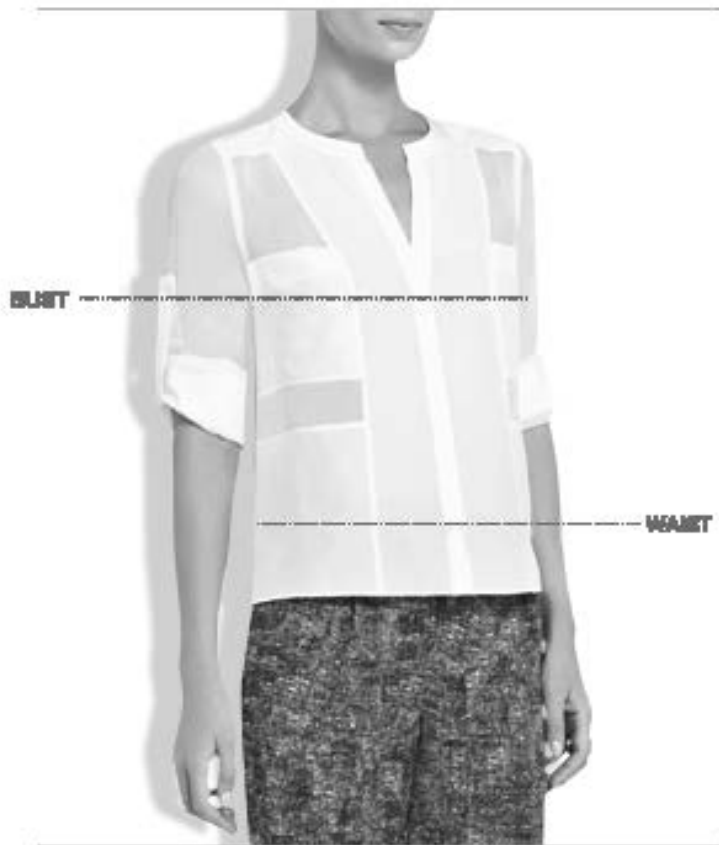
- Concealed back zipper closure.
- Material: Fabric body: 100% nylon tulle; fabrics 2-3: 100% polyester mesh; lining: 100% polyester crepe de chine.
- Care: Washable, dry clean recommended.
- Imported.
- Mid-weight, non-stretch fabric.
- Model is approximately 5'9" and wearing US size small.
- Sizes: XXS-L.

# MEASUREMENTS

**This guide to measurements is intended to serve as a quick point of reference in regards to the fit and sizing of the BCBGMAXAZRIA garments. Based on the style lines and silhouettes of the garments, variations from this measurement guide may happen and are to be expected.**

# MEASUREMENTS GUIDE TOPS

\*SIZE SMALL IS SIZE 6



## BUST

Place a cloth tape measure horizontally around the fullest part of the bust, under the arms and across the lower shoulder blades.

## WAIST

Place a cloth tape measure horizontally around the smallest part of the natural waist.

## MEASUREMENT GUIDE\*

	XXS	XS	S	M	L
	0	2-4	6	8-10	12
<b>BUST</b>	33	34	36	38	41
<b>WAIST</b>	25	26	28	30	33
<b>HIGH HIP</b>	30.5	31.5	33.5	35.5	38.5
<b>LOW HIP</b>	35.5	36.5	38.5	40.5	43.5

\* Measured in Inches

# MEASUREMENTS GUIDE – BOTTOMS



## WAIST

Place a cloth tape measure horizontally around the smallest part of the natural waist.

## HIGH HIP

Place a cloth tape measure horizontally around the body approximately 3 to 4 inches below the smallest part of the natural waist.

## LOW HIP

Place a cloth tape measure horizontally around the body approximately 8 to 9 inches below the smallest part of the natural waist.

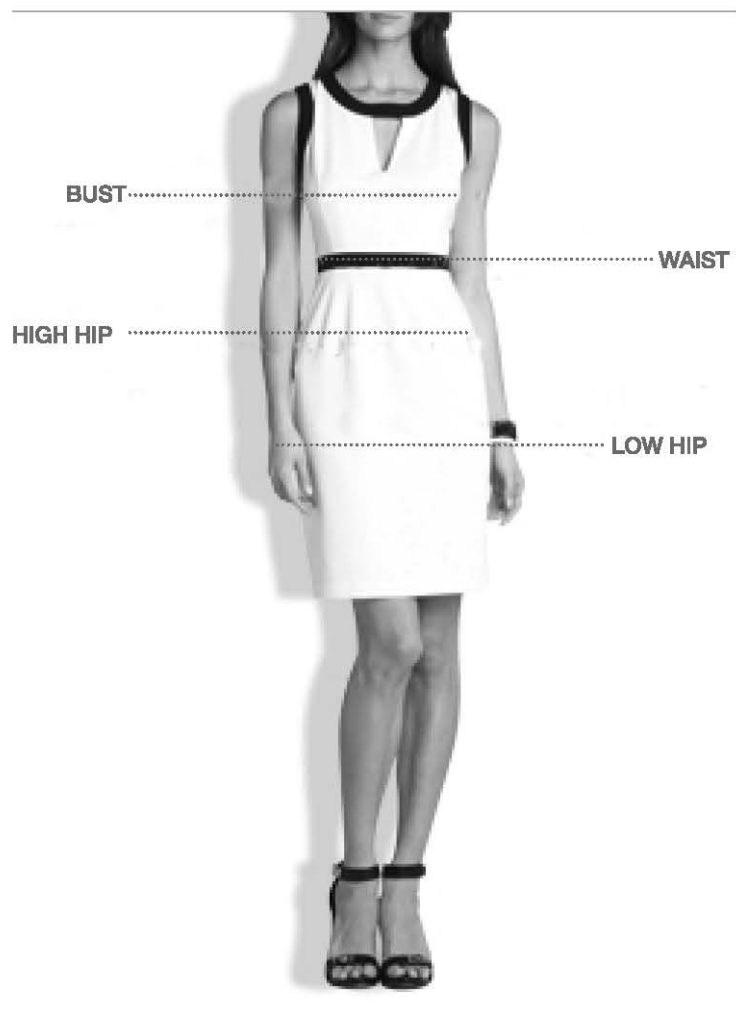
## MEASUREMENT GUIDE\*

	XXS	XS	S	M	L
	0	2-4	6	8-10	12
<b>BUST</b>	33	34	36	38	41
<b>WAIST</b>	25	26	28	30	33
<b>HIGH HIP</b>	30.5	31.5	33.5	35.5	38.5
<b>LOW HIP</b>	35.5	36.5	38.5	40.5	43.5

\* Measured in Inches  
Letter sizes are slip-on styles, number sizes are zipper styles



# MEASUREMENTS GUIDE – DRESSES



## BUST

Place a cloth tape measure horizontally around the fullest part of the bust, under the arms and across the lower shoulder blades.

## WAIST

Place a cloth tape measure horizontally around the smallest part of the natural waist.

## HIGH HIP

Place a cloth tape measure horizontally around the body approximately 3 to 4 inches below the smallest part of the natural waist.

## LOW HIP

Place a cloth tape measure horizontally around the body approximately 8 to 9 inches below the smallest part of the natural waist.

## MEASUREMENT GUIDE\*

	XXS	XS	S	M	L
	0	2-4	6	8-10	12
<b>BUST</b>	33	34	36	38	41
<b>WAIST</b>	25	26	28	30	33
<b>HIGH HIP</b>	30.5	31.5	33.5	35.5	38.5
<b>LOW HIP</b>	35.5	36.5	38.5	40.5	43.5

\* Measured in Inches  
Letter sizes are slip-on styles, number sizes are zipper styles